

ULTRASONIC SMART WATER METER



ripple
SMART METERING

TRULY WIRELESS SYSTEM

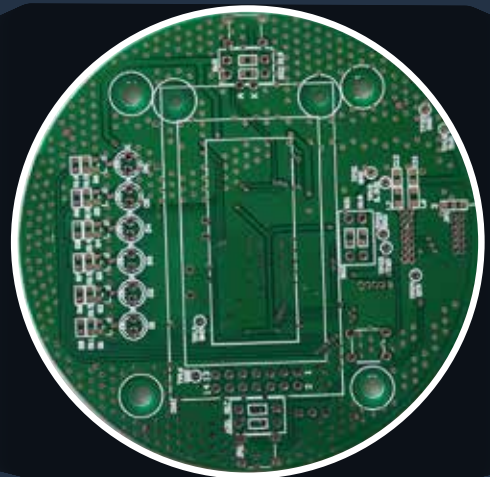
Smart Water Meter for Building Management
Save Environment -Sustainability -Cost Savings



WATER METER

Water Meter Features

- ◆ The Water flow measurement happens through ultrasonic technology
- ◆ No moving parts, maintenance free
- ◆ Bi directional flow measurement
- ◆ Suitable for Horizontal/Vertical Installations



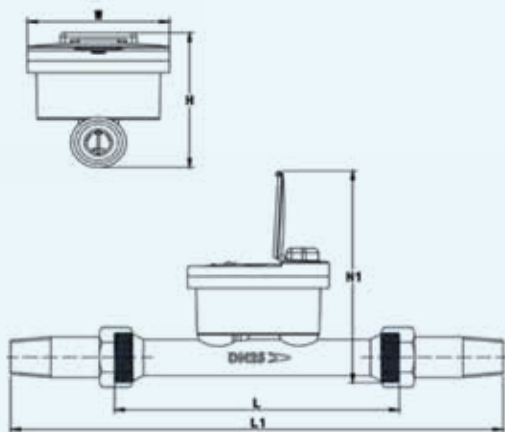
Approvals & Certifications

◆ IP68 ◆ FCRI - INDIA ◆ WPC ◆ W&M

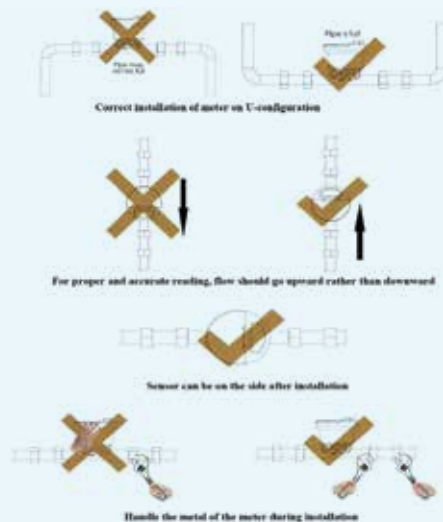
Water Meter Specifications

Size	DN15	DN20	DN25	DN32	DN40
L (mm)	165	195	225/260	230/260	245/300
L1 (mm)	261	301	347/382	356/386	376/431
W (mm)	110	110	110	110	110
H1 (mm)	167	172	177	186	197
H (mm)	102	107	112	121	132
Pipe Joint - Sensor	G 3/4"	G 1"	G 1 1/4"	G 1 1/2"	G 2"
Pipe Joint - Tail Pieces	R 1/2"	R 3/4"	R 1"	R 1 1/4"	R 1 1/2"
Max. Flow Q4(m ³ /h)	3.125	5	7.875	12.5	20
Constant Flow Q3(m ³ /h)	2.5	4.0	6.3	10	16
R100 Q2/Q1(L/h)	40/25	70/40	100/63	160/100	260/160
R160 Q2/Q1(L/h)	25/16	40/25	70/40	100/63	160/100
R250 Q2/Q1 (L/h)	16/10	25/16	40/25	70/40	100/63
Starting Flow (L/h)	1.5	2.0	2.5	4.0	5.0
Accuracy Class	Class 2				
Pressure Class	PN16(PN10/PN25)				
Environmental Class	Class C				
Electromagnetic Class	E1/E2				
Pressure Loss Class	ΔP25 (ΔP63, ΔP40)				
Flow Sensitivity Class	U5/D3				
Temp Class	T30 (T50, T70, T90)				
Data Logger	With 2 years of daily totals and 24 monthly totals				
Communication Interfaces	MBUS, RS485, LORA, 4-20mA, Pluse etc optional				
PowerSupply	3.6 VDC (Replaceable Lithium Battery)				
Mesurement Cycle	Once per second				
Average Working Current	<20 μ A				

Meter Size



Installation Guide



Ultrasonic Water Meter - Plastic Series (DN15-DN25)

This Series is one of the earliest residential ultrasonic water meter made of composite material, it is corrosion-resistant to ensure longevity.

Due to its compact design, its dimension is much smaller than regular water meters, hence it is suitable for a lot of scenarios especially in areas where installation space is limited.

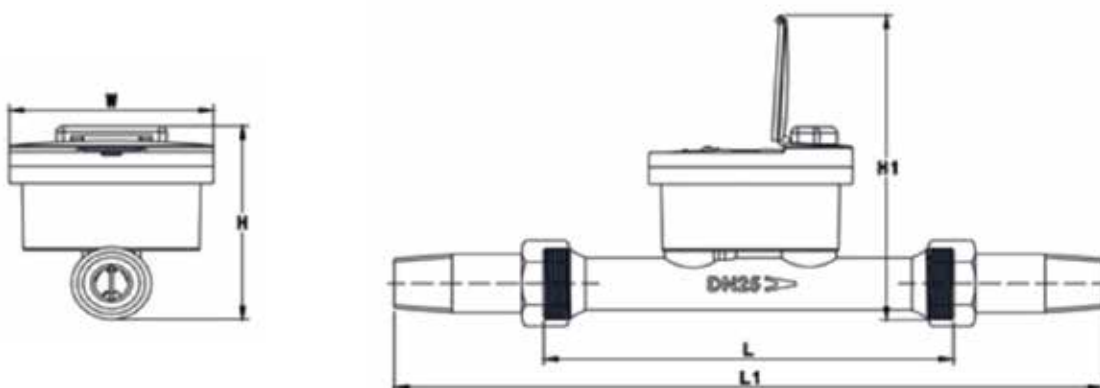


Features

- ◆ Lead-free composite flow pipe, conform with drinking water requirements
- ◆ Built-in lithium battery
- ◆ Low power consumption
- ◆ Wide dynamic range
- ◆ High measurement accuracy
- ◆ Bi-directional flow measurement
- ◆ Not affected by magnetic interference
- ◆ Tamper-proof design, automatically record when tamper is detected
- ◆ IP68 (waterproof/ submersible)
- ◆ Multiple communication interfaces optional
- ◆ Do not measure entrained air inside pipeline.



Technical Specifications



Size		DN15	DN20	DN25
Dimensions	L (mm)	165	195	225
	L1 (mm)	261	301	347
	W (mm)	95	95	93
	H1 (mm)	161	166	136
	H (mm)	96	101	100
Pipe Joint-Sensor		G3/4"	G1"	G1 1/4"
Pipe Joint- Tail Pieces		R1/2"	R3/4"	R1"
Max. FlowQ4(m³/h)		3.125	5	7.875
Constant FlowQ3(m³/h)		2.5	4.0	6.3
R100 Q2/Q1 (L/h)		40/25	70/40	100/63
R160 Q2/Q1 (L/h)		25/16	40/25	70/40
R250 Q2/Q1 (L/h)		16/10	25/16	40/25
R400 Q2/Q1 (L/h)		10/6	16/10	22/14
Starting Flow(L/h)		1.5	2.0	2.5
Accuracy Class		Class 2		
Pressure Class		PN16(PN10/ PN25)		
Environmental Class		Class B/O		
Electromagnetic Class		E1/E2		
Pressure Loss Class		$\Delta P63(\Delta P25, \Delta P40)$		
Flow Sensitivity Class		U5/D3(U0/D0)		
Temp Class		T30(T50,T70,T90)		
Data Logger		With 2 years of daily totals and 24 monthly totals		
Communication Interfaces		Lora, WMBUS, GPRS/4G, CAT1, CAT M1, NB-IoT, MBUS, RS485, Pulse, 4-20mA, Infrared etc optional		
Power Supply		3.6VDC(Replaceable Lithium Battery)		
Measurement Cycle		Once per second		
Average Working Current		$\leq 20\mu A$		
Customization		Other technical specifications upon customer's requests		

Ultrasonic Water Meter(DN50~DN300)



General Description

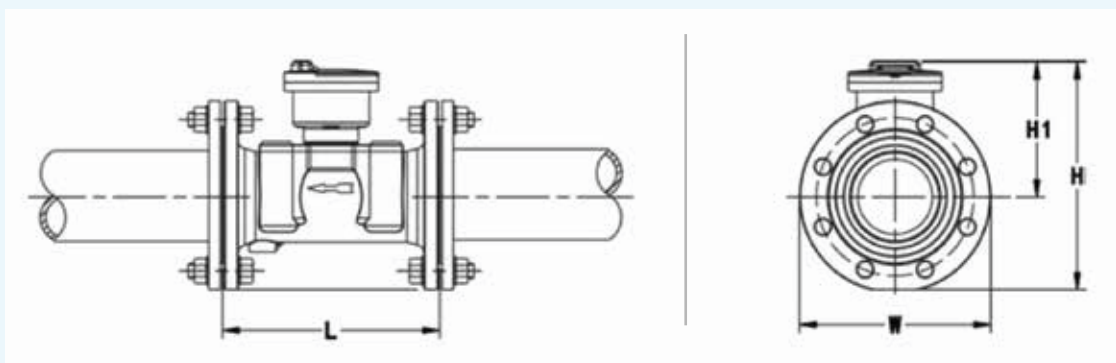
Ripple smart meters offers a series of integrated, hermetically-sealed water meters by adopting the most advanced ultrasonic transit-time difference technology for reliable flow measurement In municipal, commercial, industrial, distribution applications where the mechanical water meter fails due to the harsh environment.

Features

- ◆ Patented multi-channel technology.
- ◆ High accuracy, accuracy doesn't degrade over the life of the meter.
- ◆ Up to 20 years' longevity.
- ◆ Not affected by water impurity.
- ◆ Low pressure drop.
- ◆ IP68 protection(Waterproof/ Submersible).
- ◆ No moving parts, maintenance free.
- ◆ Bi-directional flow, ensure accuracy In both flow directions.
- ◆ Unaffected by magnetic interference.
- ◆ Tamper-proof design.
- ◆ Built-in temp sensor.
- ◆ Built-in Pressure sensor to monitor the real-time pipeline pressure

Technical Specifications

Size		DN50	DN65	DN80	DN100	DN125	DN150	DN200	DN250	DN300
L	mm	200	200	225	250	250	300	350	450	500
	inch	7.9	7.9	8.9	9.89	9.89	11.89	13.8	17.7	19.7
W	mm	165	185	200	220	250	285	340	405	640
	inch	6.5	7.3	7.87	8.7	9.8	11.2	13.4	15.9	18.1
H1	mm	150	158	175	181	199	217	246	272	320
	inch	5.9	6.2	6.9	7.1	7.8	8.5	9.7	10.7	12.6
H	mm	235	248	264	287	320	355	410	452	550
	inch	9.2	9.8	10.4	11.3	12.6	14	16.1	17.8	21.7
Max. Flow Q4	m ³ /h	31.25	50	78.75	125	200	312.5	500	787.5	1250
	GPM	137.5	220.2	346.8	550.4	880.7	1376	2201.7	3467.6	5504.2
Constant Flow Q3	m ³ /h	25	40	63	100	160	250	400	630	1000
	GPM	110	176.1	277.4	440.3	704.5	1100.8	1761.3	2774.1	4403.3
Transition Flow Q2	m ³ /h	0.16	0.256	0.4	0.64	1.02	1.6	2.56	4.0	6.4
	GPM	0.7	1.13	1.76	2.8	4.5	7.05	11.27	17.6	28.2
Min. Flow Q1	m ³ /h	0.1	0.16	0.25	0.4	0.64	1	1.6	2.52	4.0
	GPM	0.45	0.7	1.1	1.76	2.82	4.4	7.05	11.1	17.6
Starting Flow	m ³ /h	0.02	0.025	0.03	0.035	0.05	0.07	0.1	0.15	0.25
	GPM	0.09	0.11	0.13	0.15	0.22	0.31	0.44	0.66	1.1
Channel No.	Four Channels								Six Channels	
End Connection	Flange (PN16 or upon request)									
Flow Cell Material	304SS or Ductile Iron					Ductile Iron				
Accuracy Class	Class 2									
Pressure Class	PN16(PN10/PN25)									
Environmental Class	Class C									
Electromagnetic Class	E1/E2									
Pressure Loss Class	ΔP25 (ΔP63, ΔP40)									
Flow Sensitivity Class	U5/D3									
Temp Class	T30 (T50, T70, T90)									
Data Logger	With 2 years of daily totals and 24 monthly totals									
Communication Interfaces	MBUS, RS485, LORA, 4-20mA, Pluse etc optional									
PowerSupply	3.6 VDC (Replaceable Lithium Battery)									
Mesurement Cycle	Once per second									
Average Working Current	<20 μ A									



Contact Us



+91 99494 44123



info@ripplemetering.com
www.ripplemetering.com



#706, 6th Floor, Vasavi MPM Grand, Ameerpet,
Hyderabad, Telangana - 500038



Scan QR Code Here for Website