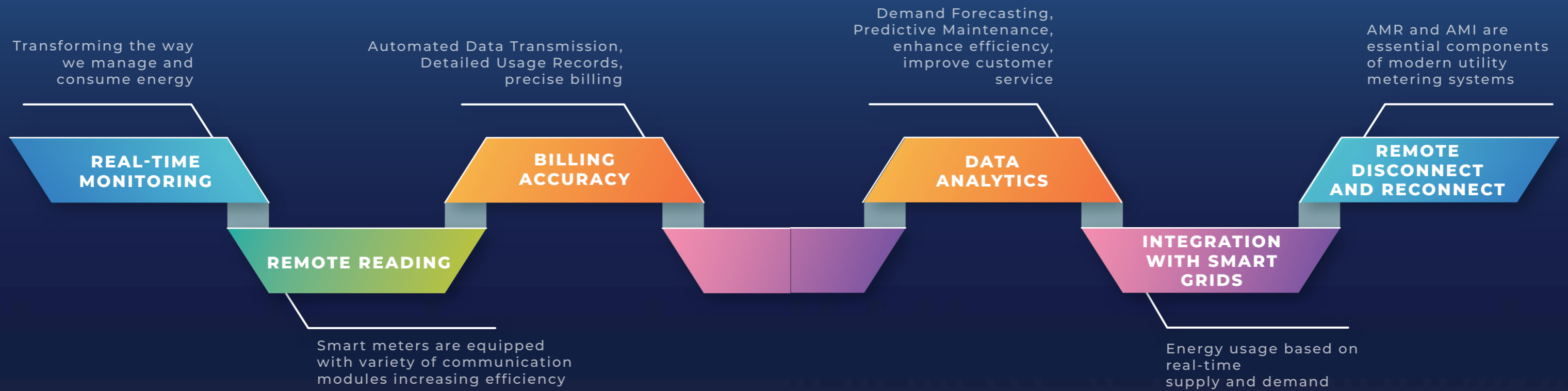




Wireless SMART GAS METER

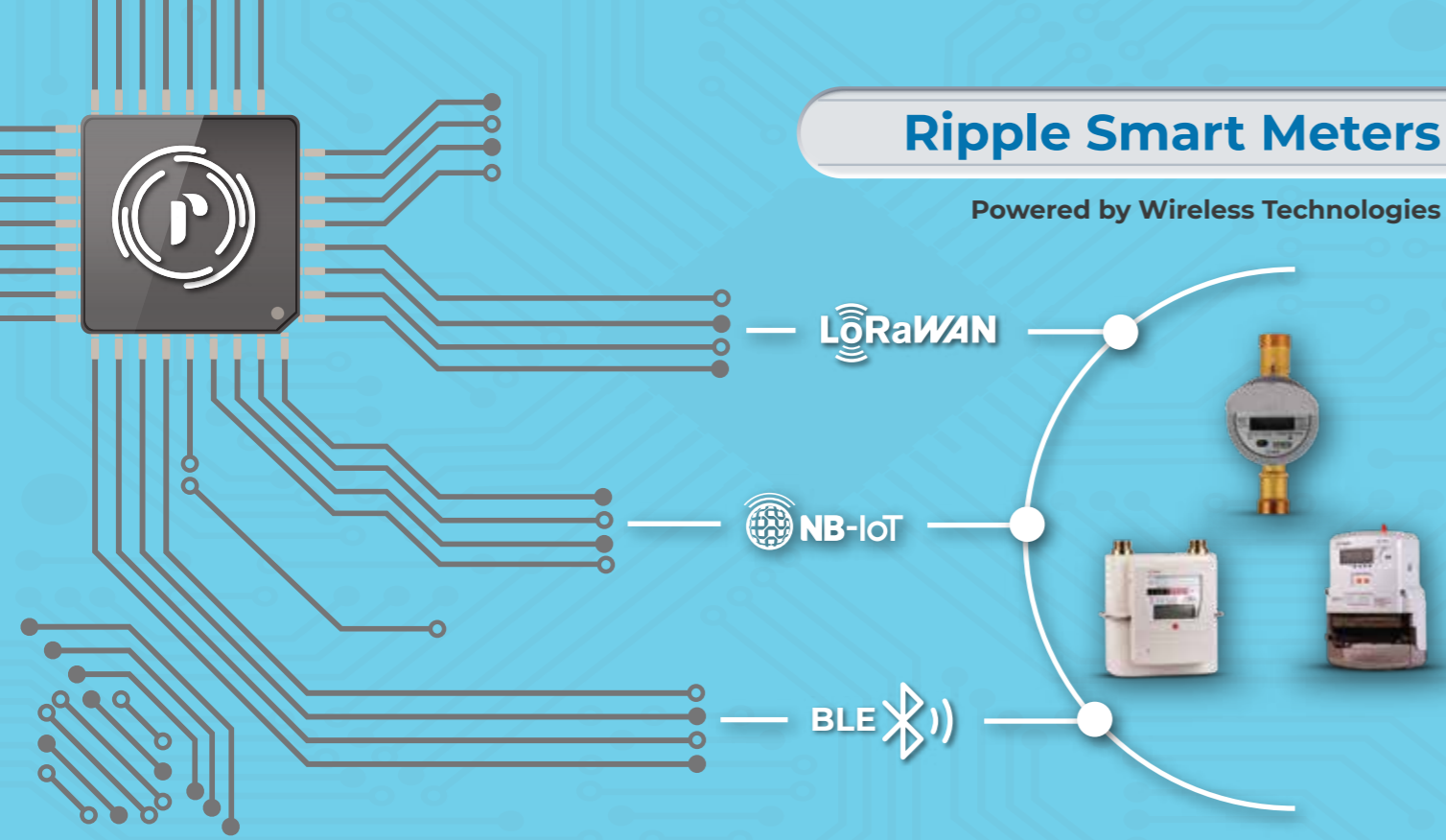
Powered by **NB-IoT & LoRaWAN**

Connecting Cities with IoT-Driven Smart Meters



Ripple Smart Meters

Powered by Wireless Technologies



LoRaWAN Technical Specifications

Parameter	Characteristic	Unit
Power supply	3.3V typical	V
RF Transmit Energy Consumption	112mA @22dBm in 470MHz typical	mA
RF Receive Power Consumption	6.8mA @BW125KHz,470MHz typical	mA
Sleep power consumption	About 3uA	uA
Receiver sensitivity - 1	- 141dBm, @470MHz, 125K bandwidth, SF=12	dBm
RF output signal	Maximum 22dBm @470MHz	dBm

NB-IoT Technical Specifications

Parameter	Characteristic
Power supply	Vin: 3.3V Typical current: 500 mA Maximum peak current: 1A
Operating Temperature	-45°C to 85°C
NB-IoT	Frequency bands: Band 3 – Uplink: 1710 MHz – 1785 MHz, Downlink: 1805MHz – 1880MHz Band 5 – Uplink: 824 MHz – 849 MHz, Downlink: 869MHz – 894MHz
	Mode of Operation: In-Band operation, Guard Band Operation, Stand Alone Operation
	Support eDRX and PSM mode
	Maximum Transmit power of 23dBm ±2dBm
	Receiver sensitivity -130dBm for both B3 & B5
Data Rate (3GPP R13)	Max uplink data rate 150 kbps Max downlink data rate 150 kbps
Device Management	LWM2M protocol for device management (DM) purpose
	MQTT based client for device management (DM) purpose
	Support HTTPs/HTTP/PPP/CoAP/TCP/UDP





SMART GAS METER

Diaphragm

PREPAID & POSTPAID

Residential & Industrial Applications

- ◆ The Diaphragm/Ultrasonic Gas Meter can measure Natural Gas, LPG.
- ◆ Residential Meter Sizes G1.6 / G2.5 / G4.0
- ◆ Industrial Meter Sizes: G6 / G10 / G16 / G25 / G40 / G65 / G100

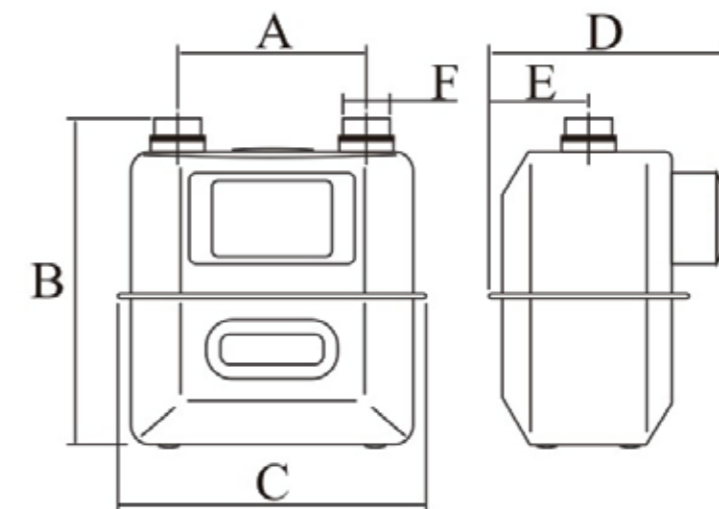
Approvals & Certifications

- ◆ OIML ◆ MID ◆ ATEX ◆ WPC



Diaphragm Gas Meter Specifications

Description	Unit	G1.6	G2.5	G4.0
Type		Diaphragm Gas Meter		
Nominal Flow Rate Qn	m ³ /h	1.6	2.5	4
Maximum Flow Rate Qmax	m ³ /h	2.5	4	6
Minimum Flow Rate Qmin	m ³ /h	0.016	0.025	0.04
Permissible Error		Qmin ≤ Q < 0.1Qmax±3%		
		0.1Qmax ≤ Q ≤ Qmax±1.5%		
Working Pressure	kPa	0.5 - 50		
Pressure Loss	Pa	≤ 50	≤ 110	≤ 170
Cyclic Volume	dm ³	1.2		
Maximum Reading	m ³	99999.999		
Minimum Reading	dm ³	0.2		
Operating Ambient Temperature	°C	(-20 - +50)		
Resistance to Water,Dust		IP65		
Case Material		Aluminium Die Casting		
Reverse Flow Protection		Yes, Mechanical		
Dimension	mm	210 x 190 x 162		
Net weight	Kg	2		



METER SIZE

Item	Measure (mm)					
	A	B	C	D	E	F (Thread)
G1.6	130(110)	210	190	162	70	3/4" NPT
G2.5	130(110)	210	190	162	70	3/4" NPT
G4	130(110)	210	190	162	70	3/4" NPT

Ripple IoT Eco System

Smart Utility Meters



Network Gateways



Ethernet

4G/Wifi Backhaul

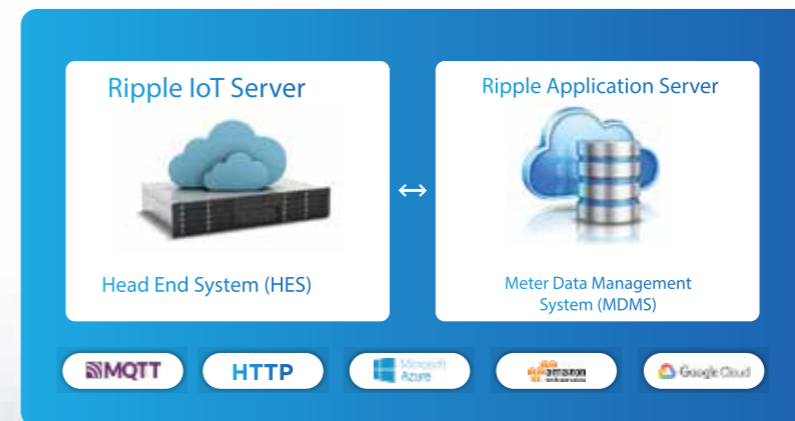
Network Servers



End User Application



(RIBS)



Contact Us



+91 99494 44123



info@ripplemetering.com
www.ripplemetering.com



#706, 6th Floor, Vasavi MPM Grand, Ameerpet,
Hyderabad, Telangana - 500038



Scan QR Code Here for Website



Scan QR Code for Ripple
Brochure Soft Copy